



# AURA-EE and satellite data

What regional agencies can bring to the EO field

Matthieu Denoux

ESA UNCLASSIFIED - For ESA Official Use Only



→ THE EUROPEAN SPACE AGENCY

## 7.6 million inhabitants:

- 12% of French population
- 78% of population living in urban area
- 4 metropolitan areas > 200 000
- 1/3 population is less than 25Y
- 4 100 municipalities

## 230 billion €: 12% French GDP

- Tourism (172 ski resorts) and Industry

## Energy and Environment

- 67% of mountain (or high) areas
- 9 Nature regional parks
- 40% of territory covered by forests
- Exporting energy, 23% RES



## A non profit organization

**80 members** : Region, public authorities, energy companies, NGOs..

## Fields of expertise:

- Sustainable energies
- Climate mitigation and adaptation (NBS)
- Sustainable development
- Waste management
- Environment protection



**900**

partners



**15**

on-going  
EU projects



**45**

years



**3,4**

M€ annual turn over



**45**

employees



Auvergne-Rhône-Alpes



[www.en.auvergnerhonealpes-ee.fr](http://www.en.auvergnerhonealpes-ee.fr)



- Founding member of **FEDARENE** network of regional energy agencies
  - Participated in more than **80 European cooperation projects** (Interreg Europe, LIFE, Horizon 2020 & Europe...)
  - Supporting the **Covenant of Mayors** for Energy and Climate initiative
  - Co-leader of the **EUSALP** (Alpine Macro regional strategy) AG9 on sustainable energy
- More than **500 partners** across Europe in 28 Member States

**Main goal:** To promote, inform and support sustainable development regional and local policies and projects

**Providing 3 main types of services to territories in transition:**



**ORCAE**  
Observatoire régional climat air  
énergie Auvergne-Rhône-Alpes

**Observatoire régional  
climat air énergie**  
Auvergne-Rhône-Alpes

- ➔ Regional key figures
- ➔ Climate, air and energy profiles and raw data for all regions in the region
- ➔ Climate indicators by « département »

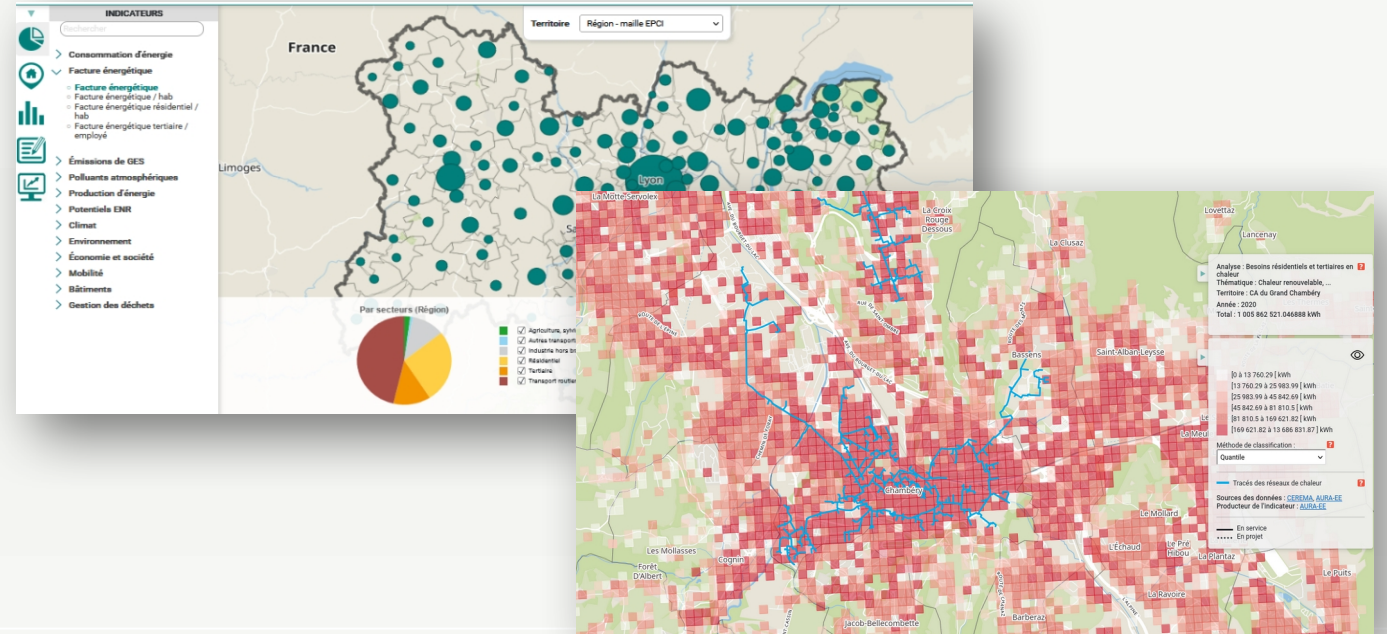
**But yet, very few satellite data**

Co-hosted with  
Atmo, Météo  
France, Cerema



- ➔ Multi-thematic indicators at different territorial levels
- ➔ Transition trajectories
- ➔ Simulation of environmental and socio-economic impacts
  - ➔ Development of territorial strategies
  - ➔ Dashboards to manage regional transition

A partnership tool to help manage the **transition of territories**, co-constructed with territories



- How we **usually proceed**:
  - Promoting **open-source / open-data** as much as possible
  - **Involving territories** as soon as possible in the design process
  
- Thematic issues:
  - Surveying **existing PV** panel and describing potential
  - **Identifying natural risks** for a whole territory
  - Building up indicators on **climate adaptation** that could help **define a trajectory** for a territory



- **Resources consuming:**

- Human / skills
- Money consuming
  - Few money available at a single city level → groups of cities?
  - → need for “**business model**” for the tools developed (consortium of actors designing / piloting the tool)

- **Sustainability:**

- How to ensure that the tools and datasets will survive the end of a project
- How to make sure they can be updated easily
- How to ensure they are used / fully grasped by the local authorities



# Thank you!

Visit us on <https://en.auvergnerhonealpes-ee.fr/>

Matthieu Denoux, [matthieu.denoux@auvergnerhonealpes-ee.fr](mailto:matthieu.denoux@auvergnerhonealpes-ee.fr)

ESA UNCLASSIFIED - For ESA Official Use Only



→ THE EUROPEAN SPACE AGENCY